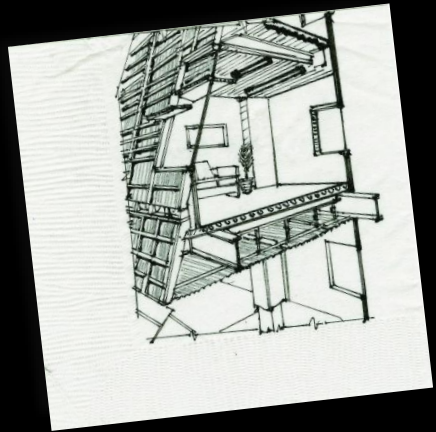


**we provide millwork and  
fixture solutions for the  
architectural, retail,  
commercial + hospitality  
markets.**





+



+



=

**your  
next  
big  
Idea.**

COLLABORATION



- 01** design + engineering
- 02** project management
- 03** manufacturing 170,000+ sqft  
160+ employees
- 04** installation
- 05** warehousing + logistics



**we don't have a factory, we have  
a workshop. we don't just use  
our hands, we engage our minds.  
while some serve clients, we  
provide solutions. while others  
fill orders, **we forge  
partnerships.****





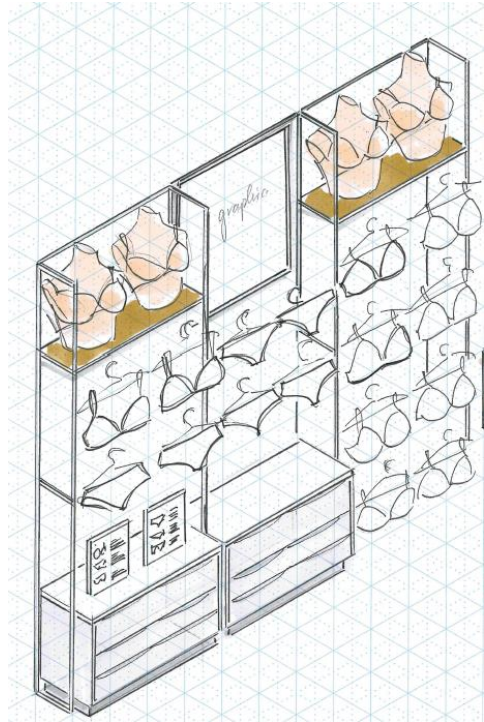
# successes

NORDSTROM - NYC



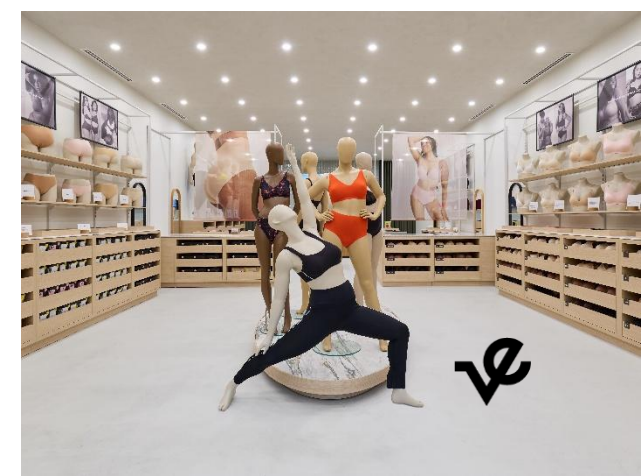
# successes

KNIX - TORONTO, CANADA



# successes

KNIX - TORONTO, CANADA



# successes

JO MALONE - MACYS HARROLD SQUARE



# successes

JO MALONE – MACYS HARROLD SQUARE



# successes

LA MER - MACYS HARROLD SQUARE



SHISEIDO  
GINZA TOKYO

LA MER



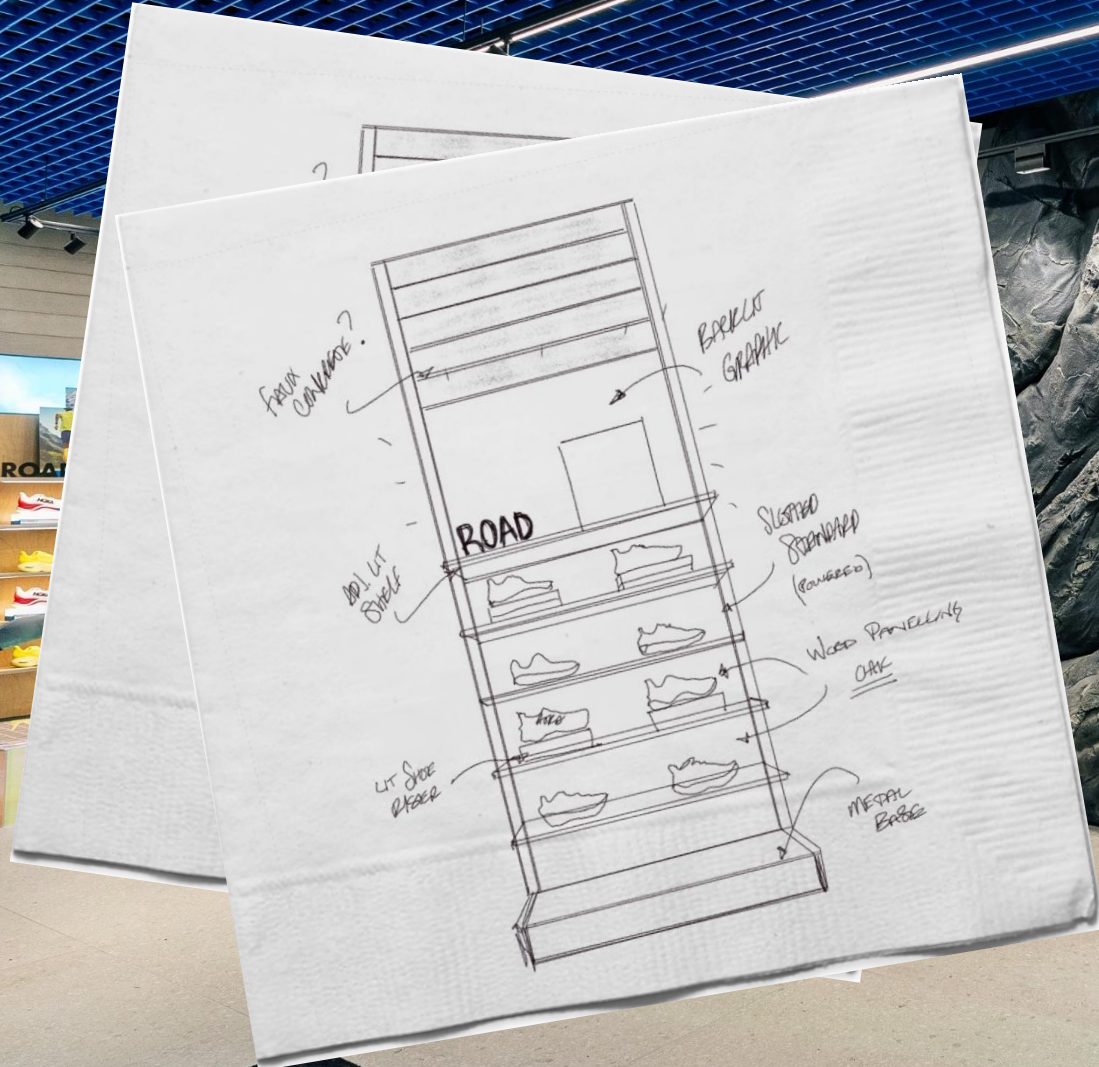
successes

LA MER - MACYS HARROLD SQUARE



# successes

HOKA - NYC FLAGSHIP



**BIG MOVES**

DEEP ACTIVE FOOT FRAME  
Cradles the foot for a secure ride

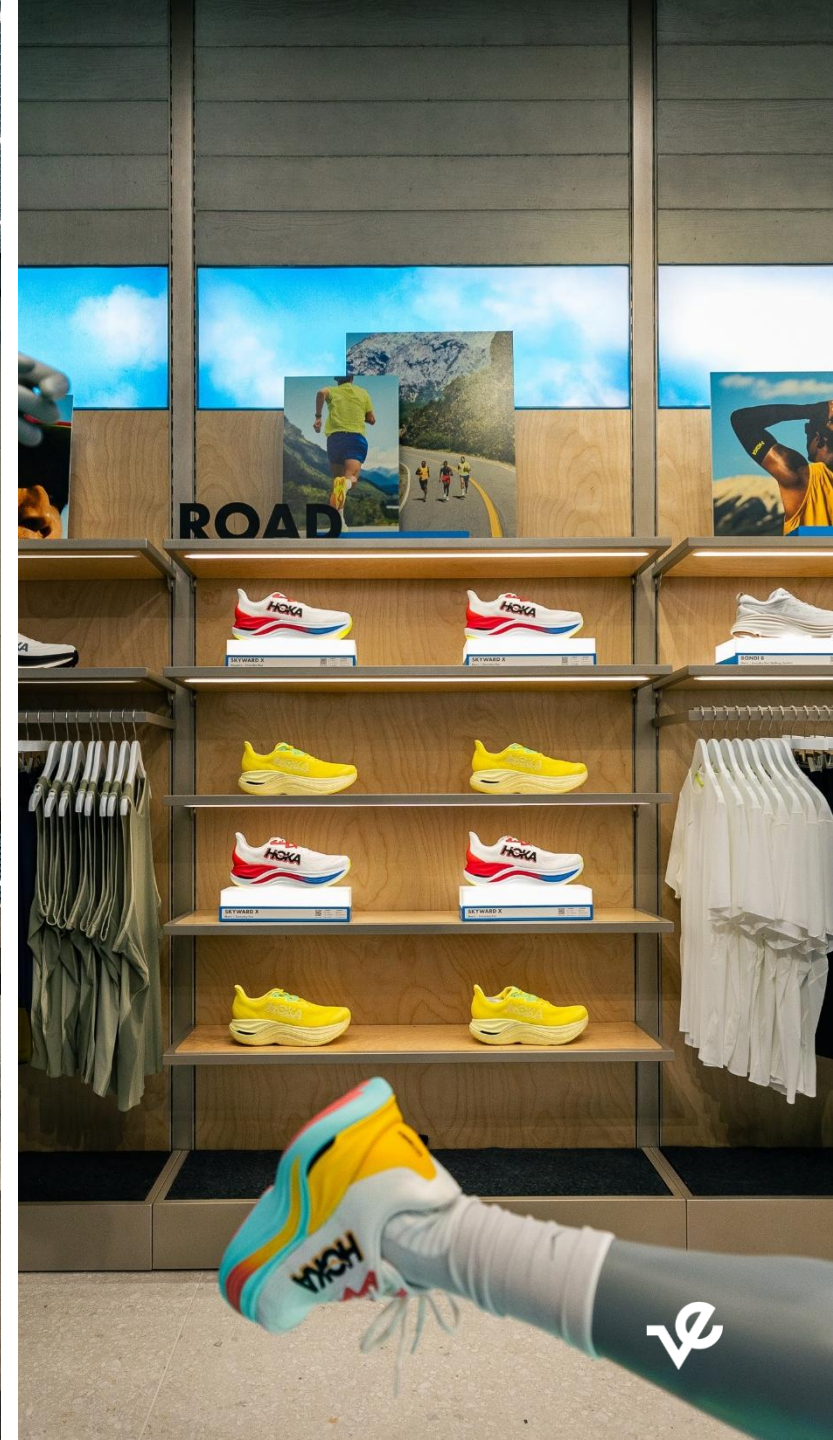
FLAT KNIT UPPER  
With zonal engineering for breathability

The poster features a mannequin in a neon orange and yellow raincoat, a white HOKA sneaker with a pink and red sole, and another HOKA sneaker on a display stand. The HOKA logo is visible on the shoes.



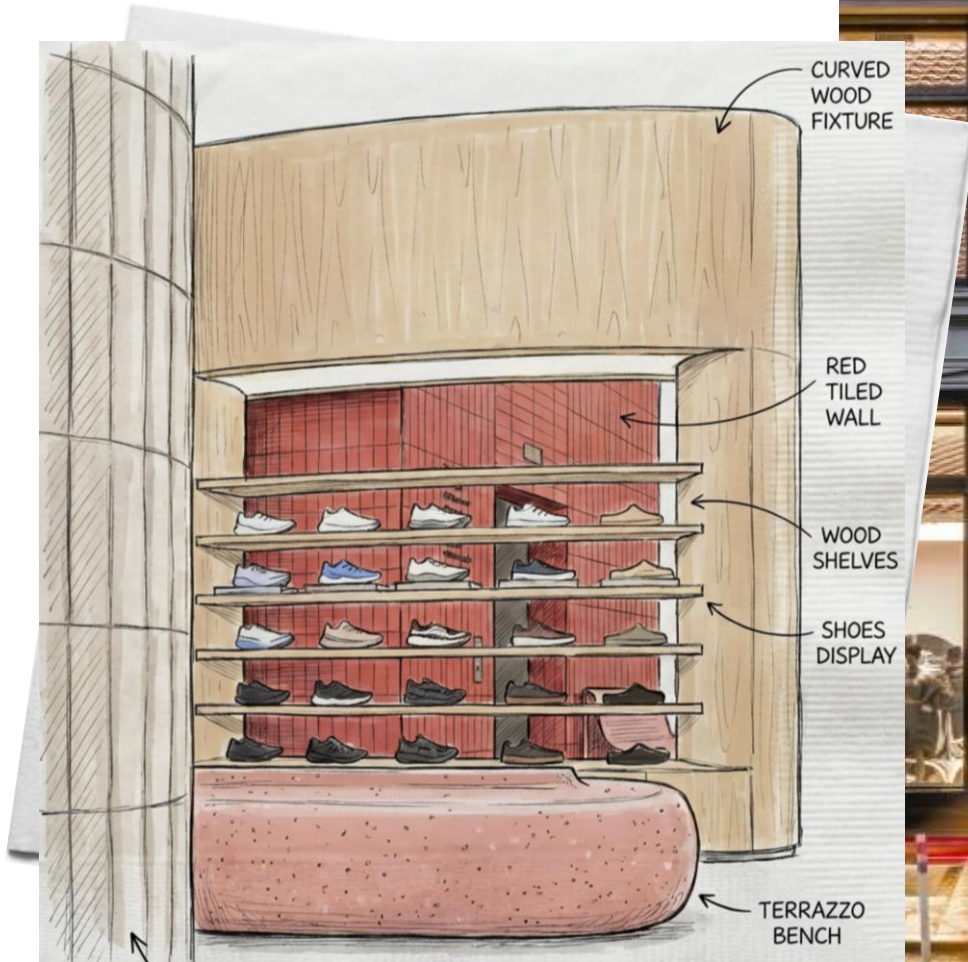
# successes

HOKA - NYC FLAGSHIP



# successes

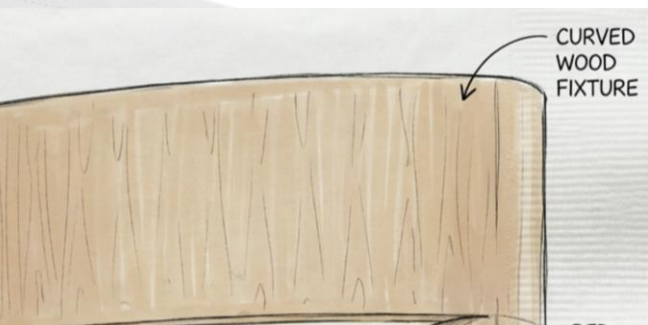
LULULEMON - SOHO FLAGSHIP



# successes

## LULULEMON – SOHO FLAGSHIP

- **Global fixture program product development**
- **Advanced material and finish development (wood, veneer, metals)**
- **Custom domestic metal components and proprietary polishing process**
- **10–12 month global fixture menu development (275+ standardized SKUs)**
- **600+ prototypes across multiple SKU variations**
- **Rapid prototyping turnaround ( $\leq 4$  weeks from approval)**
- **Sustainable materials integrated into fixture program**
- **Global flagship delivered on time, exceeding quality expectations**
- **Ranked #1 fixture vendor by Lululemon**
- **Established as a core global development and domestic production partner**



# successes

## LULULEMON – SOHO FLAGSHIP



**“Visual Elements was an exceptional partner throughout the development of our new fixture program and first installation at our SoHo flagship. Their flexibility, technical expertise, and willingness to obsess the details allowed us to realize a new vision for our fixtures, an integral component of the retail concept. From prototyping to execution, their team consistently delivered solutions that balanced design ambition with real-world performance.”**

Tom Clough, Senior Retail Fixture Designer



# successes

LULULEMON - SOHO FLAGSHIP



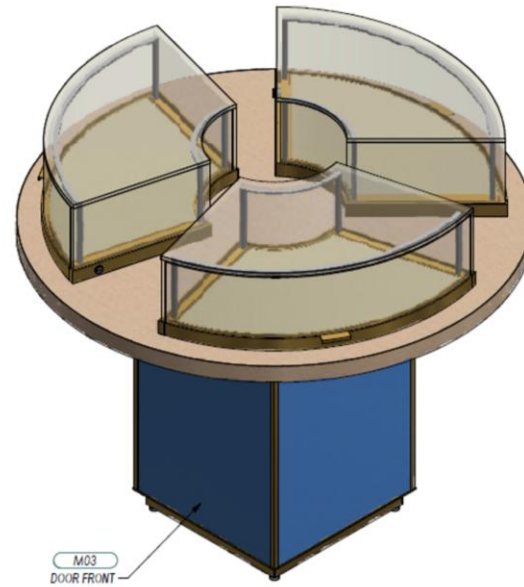
# Successes

## BIRKS - ROYALMOUNT



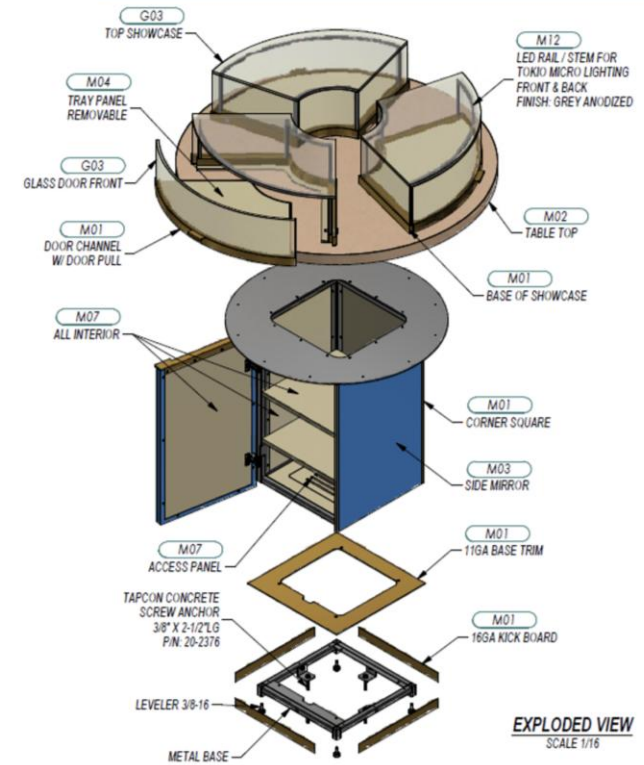
ESTIMATED WEIGHT OF UNIT  
( WITHOUT CLIENT MERCHANDISE )  
= 620 LBS.

NOTE:  
-GRIND CLEAN AND POLISH ALL WELDS TYP  
-BREAK CORNERS, DEBURR & POLISH ALL EDGES  
-DRILL DRAIN HOLES AS REQUIRED FOR FINISHING  
-PROVIDE HANG HOLES AS REQUIRED FOR FINISHING



ISOMETRIC  
SCALE 1/10

CALLOUT	FINISH SCHEDULE DESCRIPTION
M01	Brushed bronze metallic finish plate ( VE - 1209 )
M02	Warm Oak
M04	CHARM Dune - Majilite
M12	Grey Anodized VE-00599-01 (Silver Aluminum)
M03	7.5mm Blue Mirror
G03	P5A (11mm Ultra Clear Laminated Glass)
M07	Ingot Grey 828 Uniboard. Finish Dolomite
M???	PC TO MATCH 7.5mm BLUE MIRROR
M100	VE898 PC BISMARCK GOLD PMB 2015

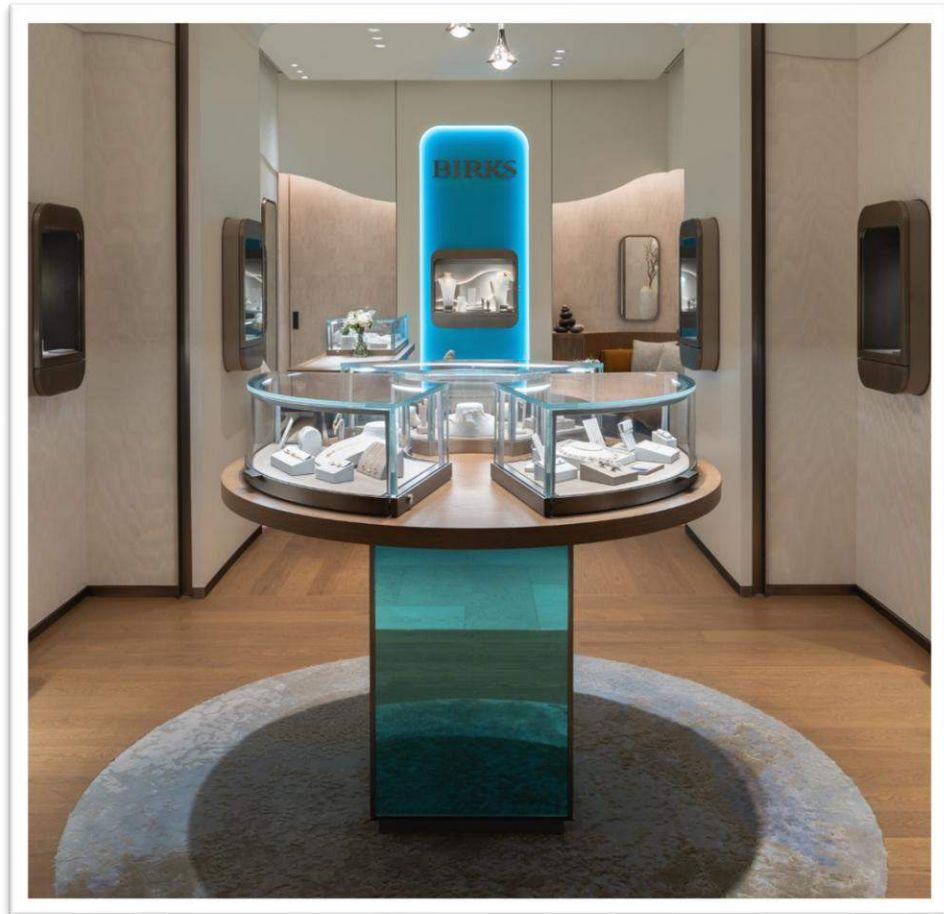


EXPLODED VIEW  
SCALE 1/16



# successes

BIRKS - ROYALMOUNT



# successes

BIRKS - ROYALMOUNT



# successes

UGG Factory Retail



# successes

UGG Factory Retail



# successes

UGG Factory Retail



# successes

TABAYER - NYC DEBUT



# successes

TABAYER - NYC DEBUT



# successes

TABAYER - NYC DEBUT



# successes

Louis Vuitton – 24K Gold Plated Fixtures

Produced detailed metal fixtures and components for multiple LVMH millwork partners



# brands we collaborate with:

NORDSTROM

 lululemon

LVMH

 MOOSE KNUCKLES

CLINIQUE

 COACH

LA MER

 HOKA

 HERMÈS  
PARIS

 MAISON  
BIRKS  
EST. 1879

 UGG

 LG



SAVAGE FENTY  
LINGERIE BY RIHANNA

ESTÉE  
LAUDER  
COMPANIES





visual elements



TruBend 5170



thank-you